



DISCOVER  
THE NEW

## A FRESH PERSPECTIVE\_

30 Years since the creation of our Biz Collection brand, we're still as inspired as ever.

Our mission over the years has been to not only bring you the latest in design, but also to inspire you with new ways to wear your uniform.

This year's range seeks to blur the lines between formal and casual as workplace trends respond to a growing demand for more versatility and comfort. We've incorporated stretch fabrics, natural fibres, and explored more relaxed silhouettes.

So, we invite you to take a break from routine and discover a fresh way forward to your everyday uniform.





# CASUAL CITY

---

Relax your workplace uniform  
with effortless pieces that evoke  
a modern yet polished style.

Just add sneakers.



*How we wear it*

Layer our AERO T-shirt under our ROMA knitwear for a clean, minimalist look.



*Left*  
WP916M Roma Mens Pullover  
T800MS Aero Mens Tee  
BS915M Barlow Mens Pant  
Also available in Ladies

*This page*  
S910ML Jagger Mens Shirt  
BS915M Barlow Mens Pant  
Also available in Ladies

CASUAL CITY\_



Incorporate knit tops  
and casual pants to  
create a contemporary  
workplace wardrobe.



*Top*  
LC916L Roma Ladies Cardigan  
BS909L Remy Ladies Pant

*Top right*  
K624LS Mia Ladies Top  
BS915L Barlow Ladies Pant

*Right*  
S910LT Jagger Ladies Shirt  
BS724L Lawson Ladies Chino  
Also available in Mens

*Far right*  
S627LN Madison Ladies Sleeveless Top  
LC916L Roma Ladies Cardigan  
BS909L Remy Ladies Pant

CASUAL CITY\_



A dress that's as comfortable  
as your favorite T-shirt?  
Look no further than  
our Paris knit dress.



*This page*  
BS911L Paris Ladies Dress



*How we wear it*

Our classic REGENT shirt gets a streetwear twist when paired with our LAWSON chinos and sneakers.



*Left*  
S912ML Regent Mens Shirt  
BS724M Lawson Mens Chino  
Also available in Ladies

*Top*  
S912LL Regent Ladies Shirt  
BS724L Lawson Ladies Chino  
Also available in Mens

BIZ COLLECTION

WORKS  
WELL  
TOGETHER

---







# URBAN SPORT

---

Play it forward with a new generation  
of streetwear inspired styles.



*This page*  
T800LS Aero Ladies Tee  
TP927L Neo Ladies Pant  
Also available in Mens

*Right*  
SW926L Neo Ladies Hoodie  
TP927L Neo Ladies Pant  
Also available in Mens



*How we wear it*  
Keep it simple with our  
AERO T-shirt, NEO pant and hoodie.

## URBAN SPORT\_



Clean and modern,  
these standout sweats will  
move with style from work  
to the street to the gym.



*Top*  
P901MS Sonar Mens Polo  
Also available in Ladies

*Right*  
T800MS Aero Mens Tee  
TP927M Neo Mens Pant  
Also available in Ladies

*Far right*  
SW926M Neo Mens Hoodie  
TP927M Neo Mens Pant  
Also available in Ladies



*Right*  
J920L Titan Ladies Jacket  
Also available in Mens

*This page*  
P900MS Galaxy Mens Polo  
Also available in Ladies



*How we wear it*

A smart polo with casual jeans creates a cool laid-back vibe.

BIZ COLLECTION

# TEAM IT UP





**JAGGER SHIRT**  
Easy Care 60% Cotton, 40% Polyester  
Yarn dyed, cotton-rich, micro houndstooth

**S910ML** Mens LS: XS - 5XL  
**S910MS** Mens SS: XS - 5XL  
**S910LT** Ladies 3/4: 6 - 24  
**S910LS** Ladies SS: 6 - 24



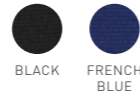
**REGENT SHIRT**  
Wrinkle resistant 100% Premium Cotton  
Yarn dyed subtle herringbone weave

**S912ML** Mens LS: XS - 5XL  
**S912MS** Mens SS: XS - 5XL  
**S912LL** Ladies LS: 6 - 24  
**S912LT** Ladies 3/4: 6 - 24  
**S912LS** Ladies SS: 6 - 24



**PARIS DRESS**  
62% Viscose, 34% Polyester,  
4% Elastane Ponte Roma Knit  
Machine washable, crease resistant, easy care

**BS911L** Ladies: XS - XL



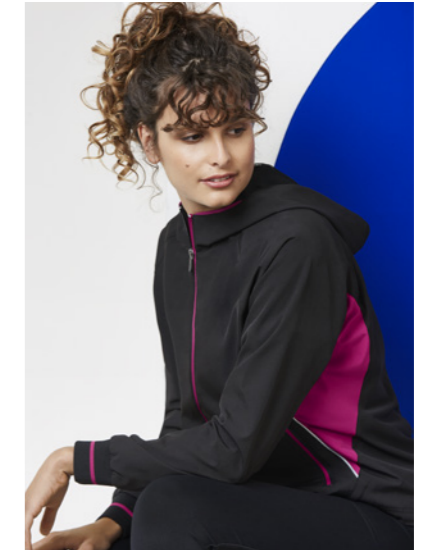
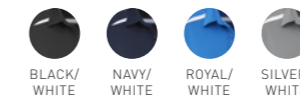
**GALAXY POLO**  
100% BIZ COOL™ Breathable Polyester  
155 GSM, UPF rating - Good

**P900MS** Mens: XS - 3XL, 5XL  
**P900LS** Ladies: 6 - 24



**SONAR POLO**  
80% BIZ COOL™ Polyester, 20% Cotton back  
185 GSM, UPF rating - Excellent

**P901MS** Mens: XS - 3XL, 5XL  
**P901LS** Ladies: 6 - 24



**TITAN JACKET**  
Outer Shell: 4-way stretch 94% Polyester, 6% Elastane  
Lining: 100% Polyester Mesh (Body) Woven (Sleeve)

**J920M** Mens: XS - 3XL, 5XL  
**J920L** Ladies: XS - 2XL  
**J920K** Kids: 4/6 - 14



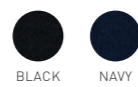
**BARLOW PANT**  
98% Cotton, 2% Elastane stretch  
Unique jacquard weave cloth made with stretch

**BS915M** Mens: 72R - 127R  
**BS915L** Ladies: 6 - 24



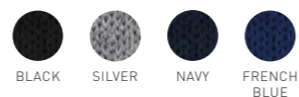
**REMY PANT**  
4-Way Stretch 62% Polyester, 34% Viscose,  
4% Elastane, machine washable, crease resistant

**BS909L** Ladies: 4 - 26



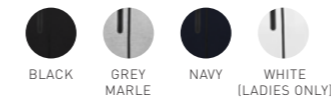
**ROMA KNIT**  
50% Merino Wool, 50% Acrylic - 14 Gauge  
Machine washable on wool setting

**WP916M** Mens: XS - 3XL, 5XL  
**LC916L** Ladies: XS - 3XL



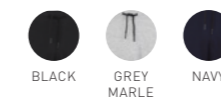
**NEO HOODIE**  
Black, White, Navy: 60% Polyester, 40% Cotton  
Grey Marle: 65% Cotton, 28% Polyester, 7% Viscose

**SW926M** Mens: XS - 3XL  
**SW926L** Ladies: XS - 2XL



**NEO PANT**  
Black, White, Navy: 60% Polyester, 40% Cotton  
Grey Marle: 65% Cotton, 28% Polyester, 7% Viscose

**TP927M** Mens: XS - 3XL  
**TP927L** Ladies: XS - 2XL



Discover our full range  
on our website or ask for  
our Biz Collection 2019  
Catalogue.





**BIZ COLLECTION**



[WWW.BIZCOLLECTION.CO.NZ](http://WWW.BIZCOLLECTION.CO.NZ)