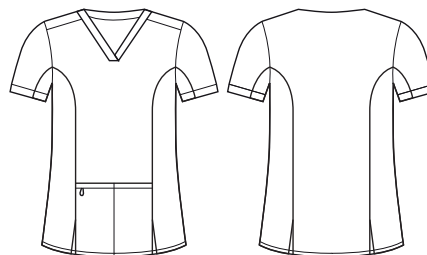




## RILEY WOMENS V-NECK STRETCH SCRUB TOP

CST043LS



### COLOURS



### GARMENT MEASUREMENTS

SIZE	XXS	XS	S	M	L	XL	2XL	3XL
½ CHEST* (CM)	41.5	45	48.5	52	55.5	59	62.5	66
LENGTH FROM HSP (CM)	67	68	69	70.1	71.2	72.3	73.4	74.5

½ CHEST MEASURED 2.5CM BELOW UNDERARM

### STYLE F&B

- 2 front deep pockets, no chest pocket
- All stress points bar-tacked
- Utility loops in self fabric in RHS pocket
- Bungee loop for swipe card/keys
- Tailored fit with princess seams to provide shaping from bust to waist
- Stretch side panels that run underarms down to hemline, provides extra movement and comfort
- Go up one size if in-between sizing
- Functional front side splits to allow easy access into pant pockets and for movement

### FABRIC COMPOSITION

- Main: 52% Cotton 45% Polyester 3% Elastane
- Stretch side panels: 88% Polyester 12% Elastane with antibacterial treatment (Note stretch side panels: All colours with dyed to match stretch panels, expect Midnight Navy which has Navy stretch panels)
- Suitable for warmer climates due to high cotton content
- Soft against the skin - base layer not required

### CARE DETAILS

- Machine washable at 60°C with like colours, inside out - to hold vibrancy of colours. Do not bleach, tumble dry low. Cool iron if required, dry cleanable.

### MATCH WITH

- Wear with its matching scrub lowers CSP042LL or CSP047LL
- Mens style also available

